

Blue Label GRANITE

1841 Robert S Light Blvd. Bldg. B

Buda, TX 78610

512-738-5788



Blue Label Granite, a countertop company that opened in 2016 and is located at:

1481 Robert S Light Blvd in Buda, TX.

We serve the Buda, Austin and all of the surrounding areas. The three owners started this company to offer amazing customer service, affordable options, quality workmanship and fast turn around times!



WHAT YOU'LL FIND INSIDE:

- 30+ DIFFERENT IN-STOCK COUNTERTOP OPTIONS
- EDGE PROFILES
- SINK SELECTIONS
- WHAT TO EXPECT ON THE DAY OF INSTALLATION
- CARE & MAINTENANCE
- DISCLOSURE STATEMENTS
- WARRANTY & INSTALL TERMS
- FAQ'S



Table of Contents

Click selection below

[Natural
Quartzite](#)

[Marble](#)

[GRANITE](#)

[Engineered
Quartz](#)

[Sink
Selections](#)

[Edge
Profiles](#)

[Extended
Edge
Options](#)

[Informative
Documents](#)

[FAQ's](#)



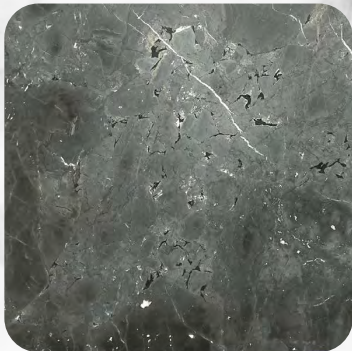
Blue Label GRANITE

Natural Quartzite Selections

Quartzite is a natural stone. Pictures may vary from actual slab. Natural Quartzite needs to be sealed every 8-12 months.

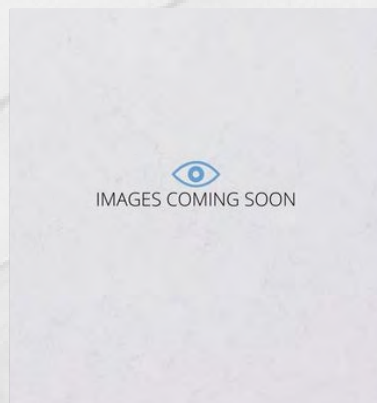
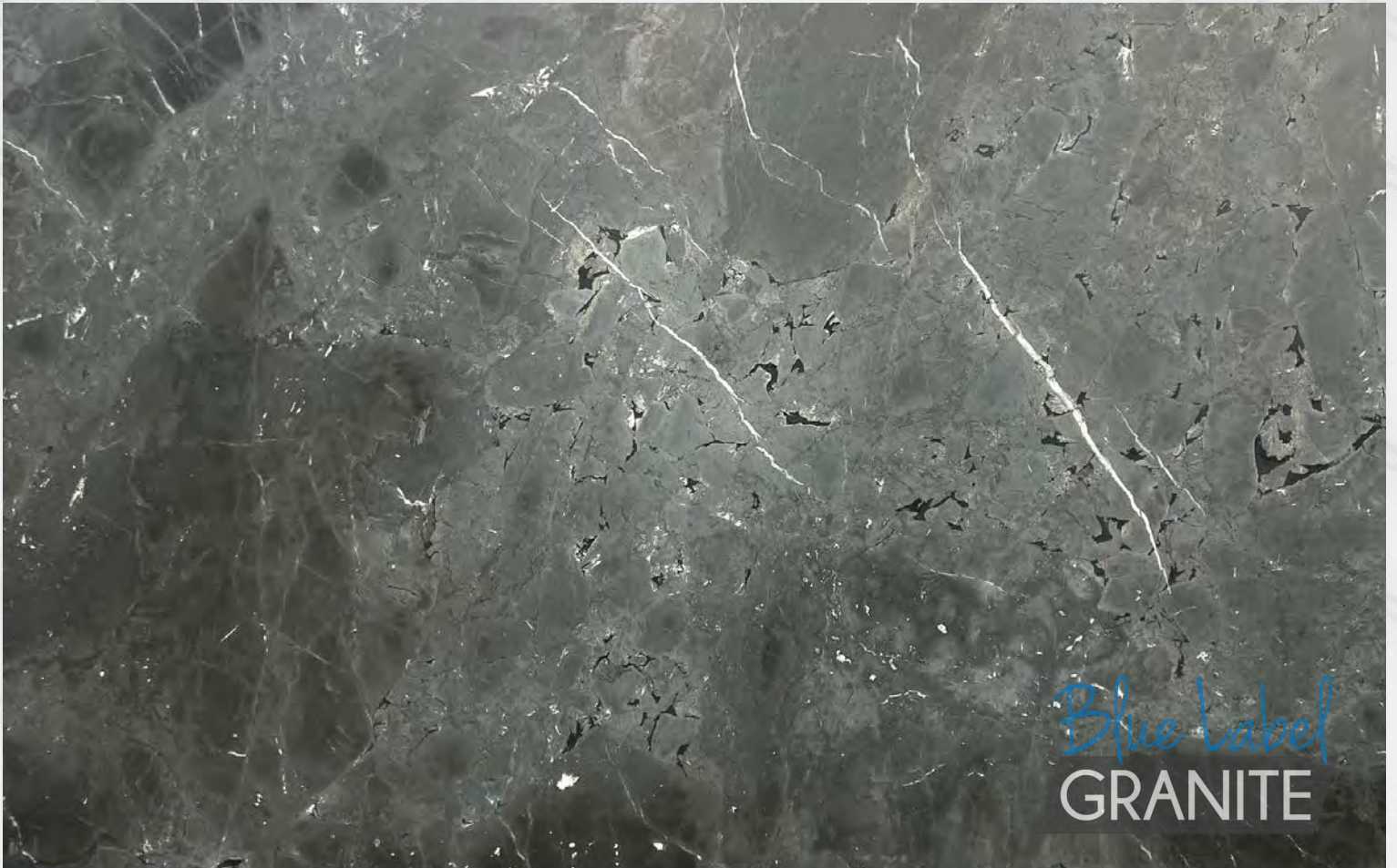
** These colors might not always be offered at the same time. The movement of these colors change from bundle to bundle. Get with a sales rep to see what is available now **

Click selection below



Black Diamond Leathered 3CM

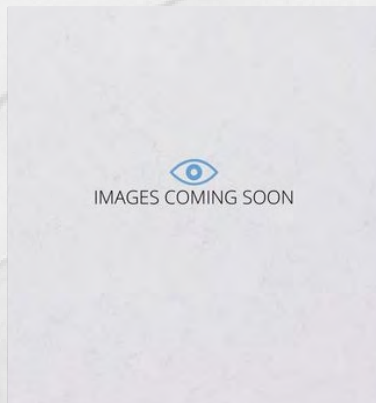
Quartzite - Natural Stone



Quartzite is a natural stone. Pictures may vary from actual slab.
Natural Quartzite needs to be sealed every 8-12 months.

Bianco Superior 3CM

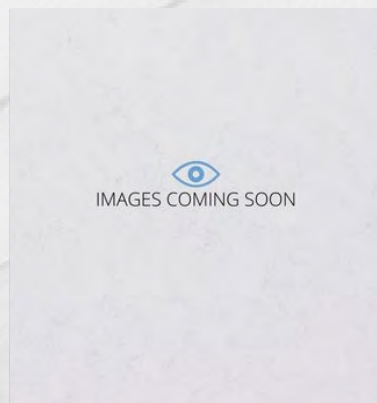
Quartzite - Natural Stone



Quartzite is a natural stone. Pictures may vary from actual slab.
Natural Quartzite needs to be sealed every 8-12 months.

Blue Explosion 2CM

Quartzite - Natural Stone



Quartzite is a natural stone. Pictures may vary from actual slab.
Natural Quartzite needs to be sealed every 8-12 months.

Taj Mahal (Dual Finish) 3CM

Quartzite - Natural Stone

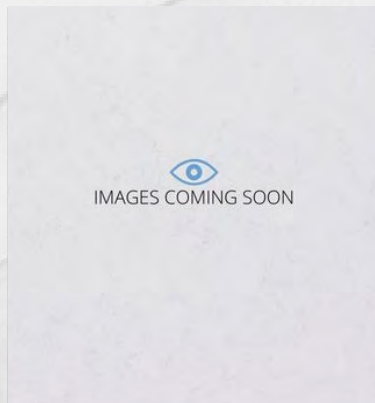
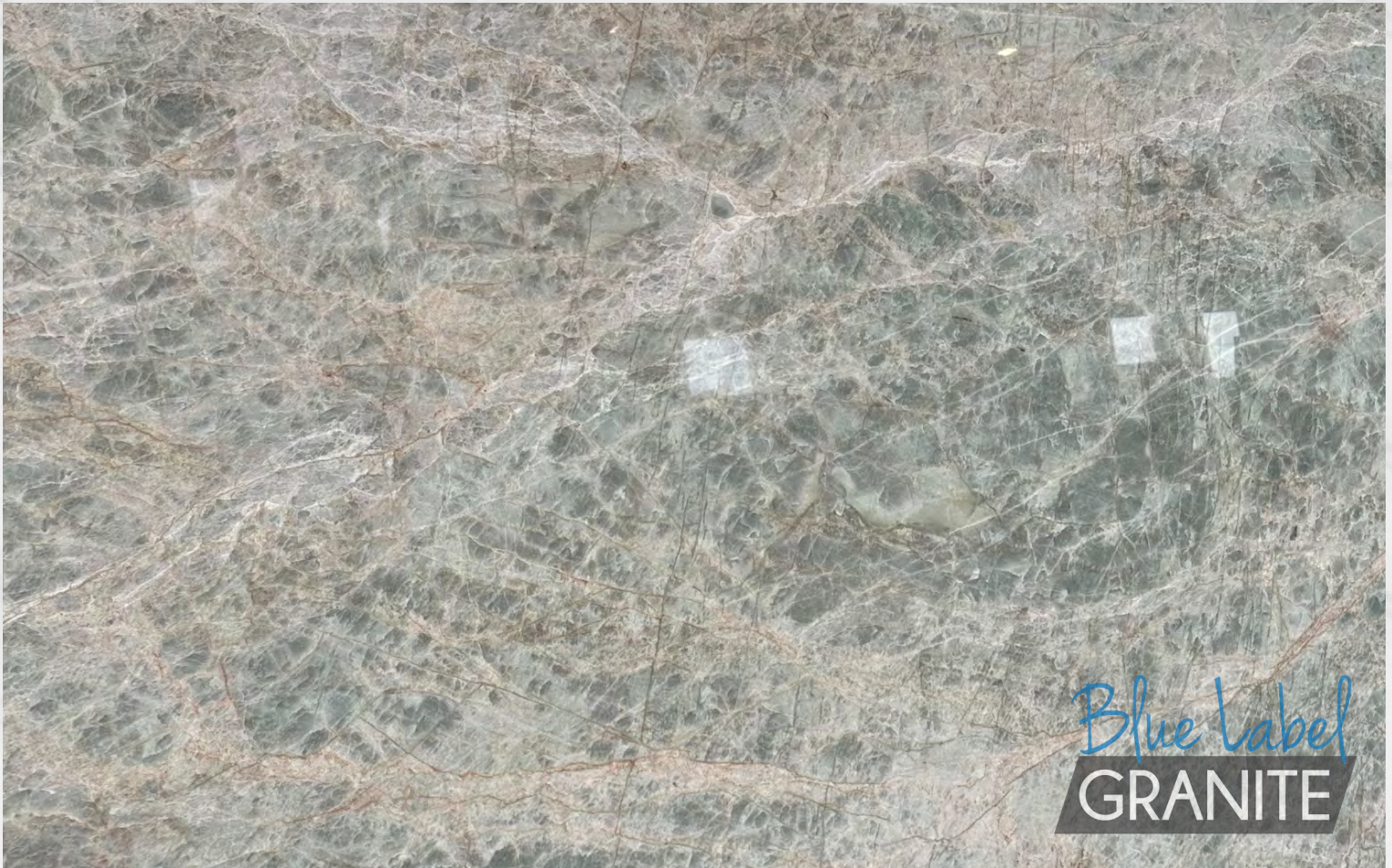
Polished
OR
Leathered



Quartzite is a natural stone. Pictures may vary from actual slab.
Natural Quartzite needs to be sealed every 8-12 months.

Aqua Light 3CM

Quartzite - Natural Stone



Quartzite is a natural stone. Pictures may vary from actual slab.
Natural Quartzite needs to be sealed every 8-12 months.

Blue Label GRANITE

Granite Selections

Granite is a natural stone. Pictures may vary from actual slab. Granite needs to be sealed every 18-24 months.

** These colors might not always be offered at the same time. The movement of these colors change from bundle to bundle. Get with a sales rep to see what is available now **

Click selection below



Black Pearl Leathered 3CM

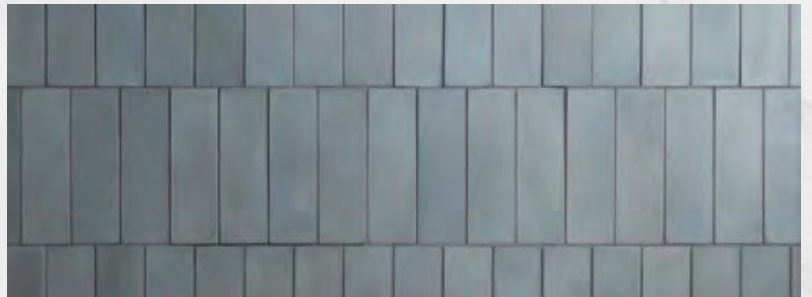
Granite - Natural Stone



Granite is a natural stone. Pictures may vary from actual slab.
Granite needs to be sealed every 18-24 months.

Blue/Brown Dunes 3CM

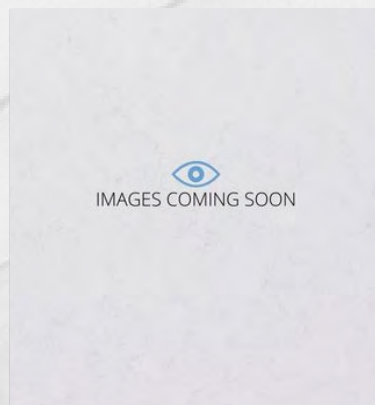
Granite - Natural Stone



Granite is a natural stone. Pictures may vary from actual slab.
Granite needs to be sealed every 18-24 months.

White Ice 3CM

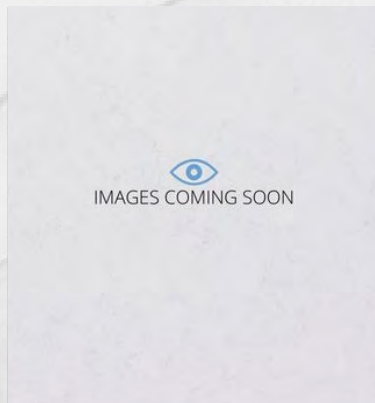
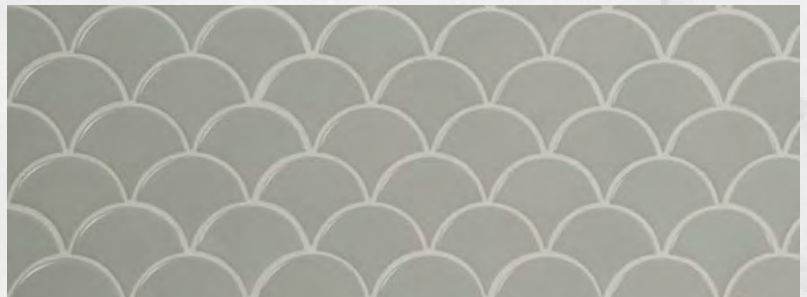
Granite - Natural Stone



Granite is a natural stone. Pictures may vary from actual slab.
Granite needs to be sealed every 18-24 months.

Black Mist Leathered 3CM

Granite - Natural Stone



Granite is a natural stone. Pictures may vary from actual slab.
Granite needs to be sealed every 18-24 months.

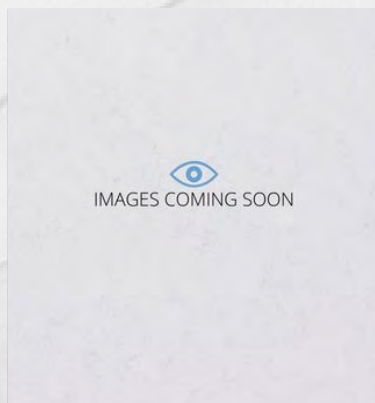
Sparta White 3CM

Granite - Natural Stone

NEW
ARRIVAL!



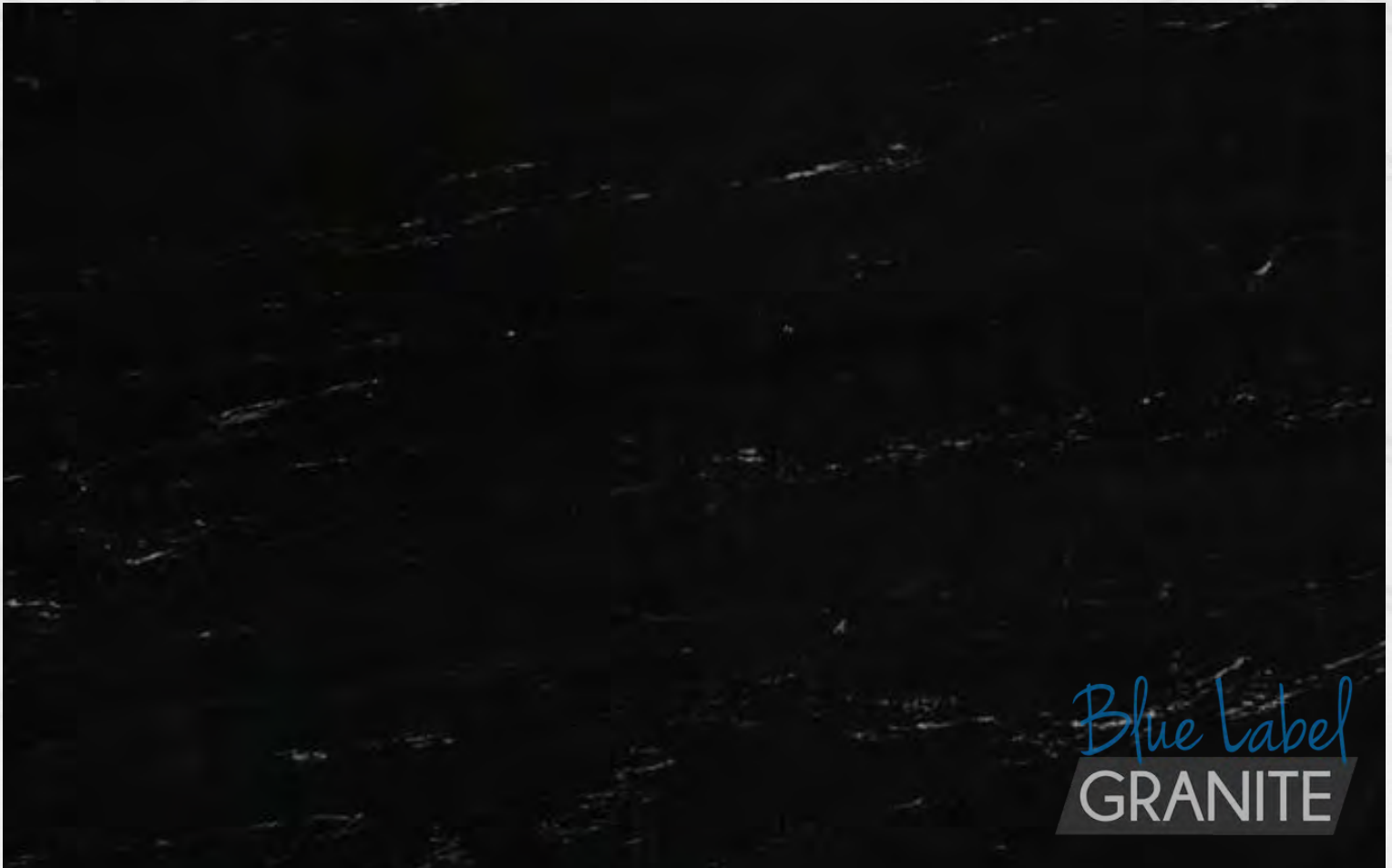
Blue Label
GRANITE



Granite is a natural stone. Pictures may vary from actual slab.
Granite needs to be sealed every 18-24 months.

Via Lactea 3CM

Granite - Natural Stone



Granite is a natural stone. Pictures may vary from actual slab.
Granite needs to be sealed every 18-24 months.

Viscon White 3CM

Granite - Natural Stone



Granite is a natural stone. Pictures may vary from actual slab.
Granite needs to be sealed every 18-24 months.

Blue Label GRANITE

Engineered Quartz Selections

Engineered Quartz is stain, scratch and heat resistant. It does not need to be sealed.

Click selection below



Crystal Ice 3CM

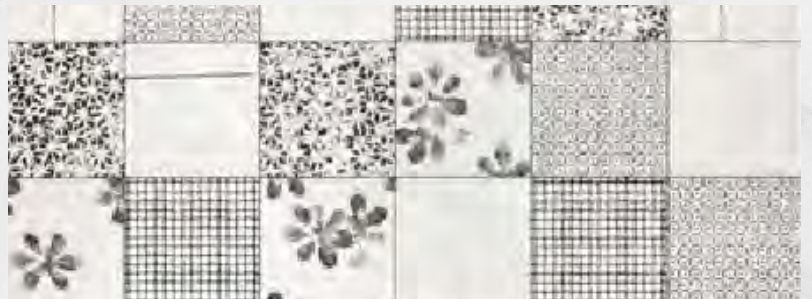
Quartz - Vicostone Engineered Quartz



Engineered Quartz is stain, scratch, and heat resistant. It does not need to be sealed.

Graphite 3CM

Quartz - Vicostone Engineered Quartz



Engineered Quartz is stain, scratch, and heat resistant. It does not need to be sealed.

Carrara 3CM

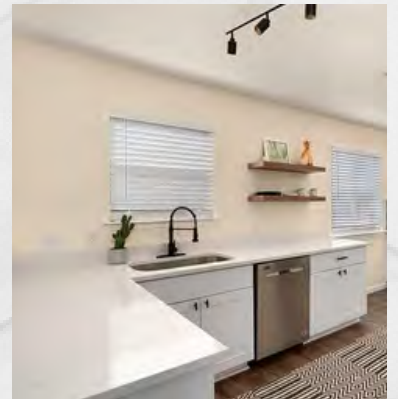
Quartz - Vicostone Engineered Quartz



Engineered Quartz is stain, scratch, and heat resistant. It does not need to be sealed.

Valley White 3CM

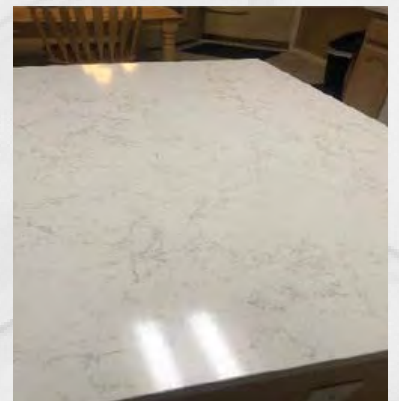
Quartz - Vicostone Engineered Quartz



Engineered Quartz is stain, scratch, and heat resistant. It does not need to be sealed.

Denali 3CM

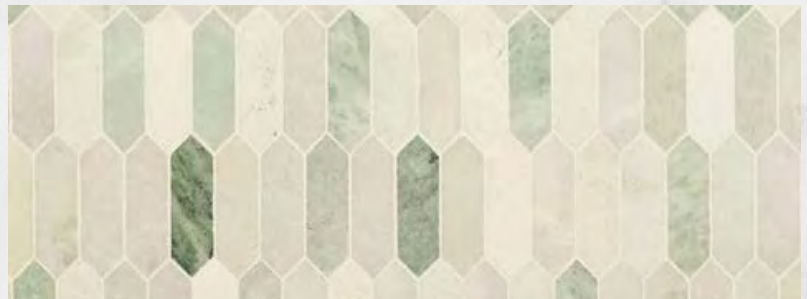
Quartz - Vicostone Engineered Quartz



Engineered Quartz is stain, scratch, and heat resistant. It does not need to be sealed.

Pure White 3CM

Quartz - Vicostone Engineered Quartz



Engineered Quartz is stain, scratch, and heat resistant. It does not need to be sealed.

Thasos White 3CM

Quartz - Vicostone Engineered Quartz

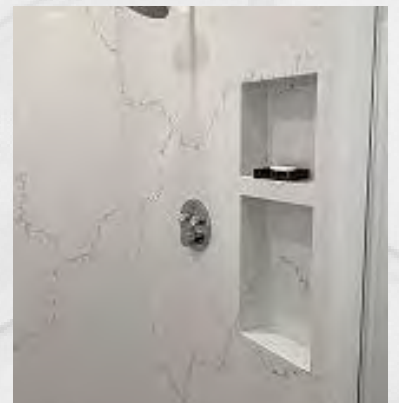
Blue Label
GRANITE



Engineered Quartz is stain, scratch, and heat resistant. It does not need to be sealed.

Misterio 3CM

Quartz - Vicostone Engineered Quartz



Engineered Quartz is stain, scratch, and heat resistant. It does not need to be sealed.

Grey Savoie 3CM

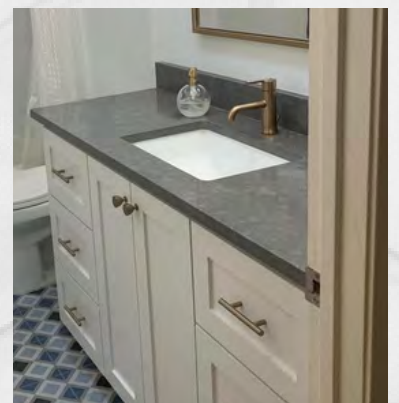
Quartz - Vicostone Engineered Quartz



Engineered Quartz is stain, scratch, and heat resistant. It does not need to be sealed.

Blue Savoy 3CM

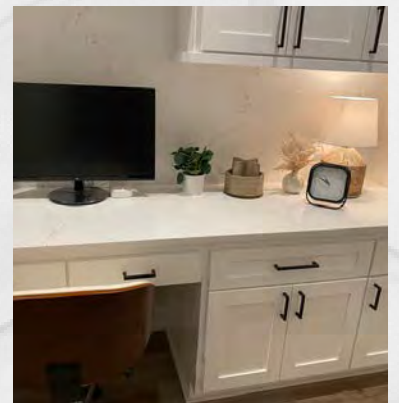
Quartz - Vicostone Engineered Quartz



Engineered Quartz is stain, scratch, and heat resistant. It does not need to be sealed.

Misterio Gold 3CM

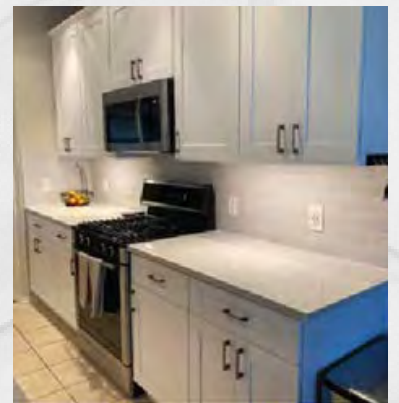
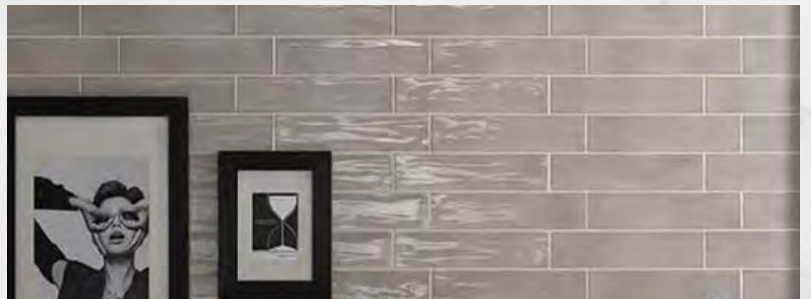
Quartz - Vicostone Engineered Quartz



Engineered Quartz is stain, scratch, and heat resistant. It does not need to be sealed.

Argento 3CM

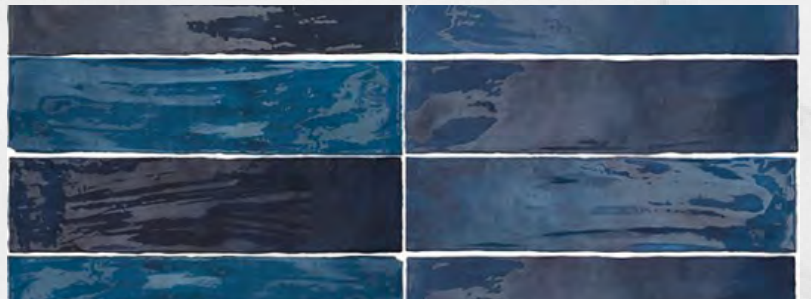
Quartz - Vicostone Engineered Quartz



Engineered Quartz is stain, scratch, and heat resistant. It does not need to be sealed.

Concreto 3CM

Quartz - Vicostone Engineered Quartz



Engineered Quartz is stain, scratch, and heat resistant. It does not need to be sealed.

Tartufo Honed 3CM

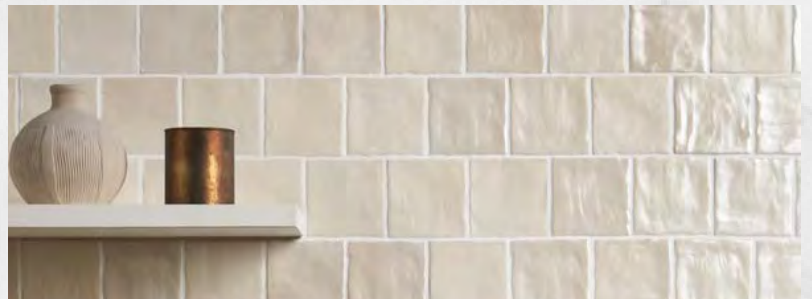
Quartz - Vicostone Engineered Quartz



Engineered Quartz is stain, scratch, and heat resistant. It does not need to be sealed.

Madre Perola 3CM

Quartz - Vicostone Engineered Quartz



Engineered Quartz is stain, scratch, and heat resistant. It does not need to be sealed.

Alessandria 3CM

Quartz - Vicostone Engineered Quartz



Engineered Quartz is stain, scratch, and heat resistant. It does not need to be sealed.

Alessandria Oro 3CM

Quartz - Vicostone Engineered Quartz



Engineered Quartz is stain, scratch, and heat resistant. It does not need to be sealed.

Venatino 3CM

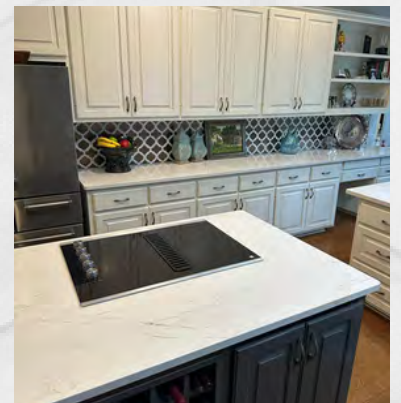
Quartz - Vicostone Engineered Quartz



Engineered Quartz is stain, scratch, and heat resistant. It does not need to be sealed.

Costa Nova 3CM

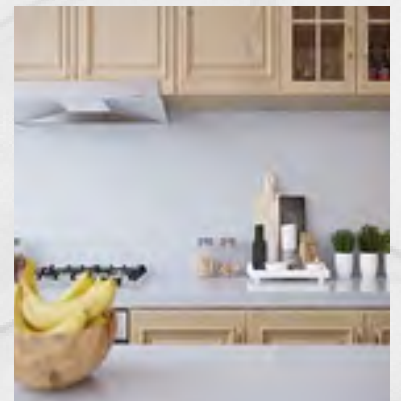
Quartz - Vicostone Engineered Quartz



Engineered Quartz is stain, scratch, and heat resistant. It does not need to be sealed.

Bettoglio 3CM

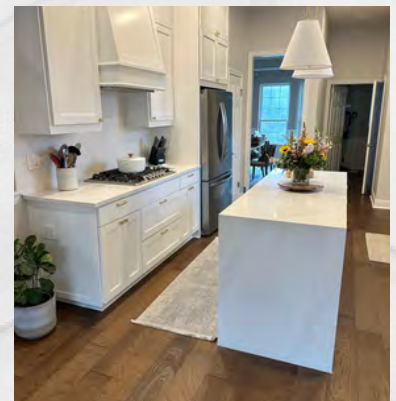
Quartz - Vicostone Engineered Quartz



Engineered Quartz is stain, scratch, and heat resistant. It does not need to be sealed.

Calacatta Caldia 3CM

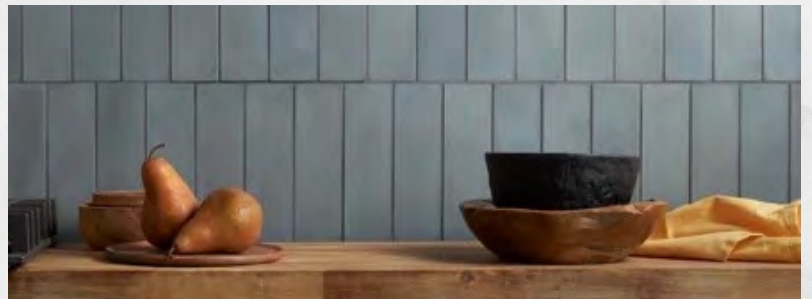
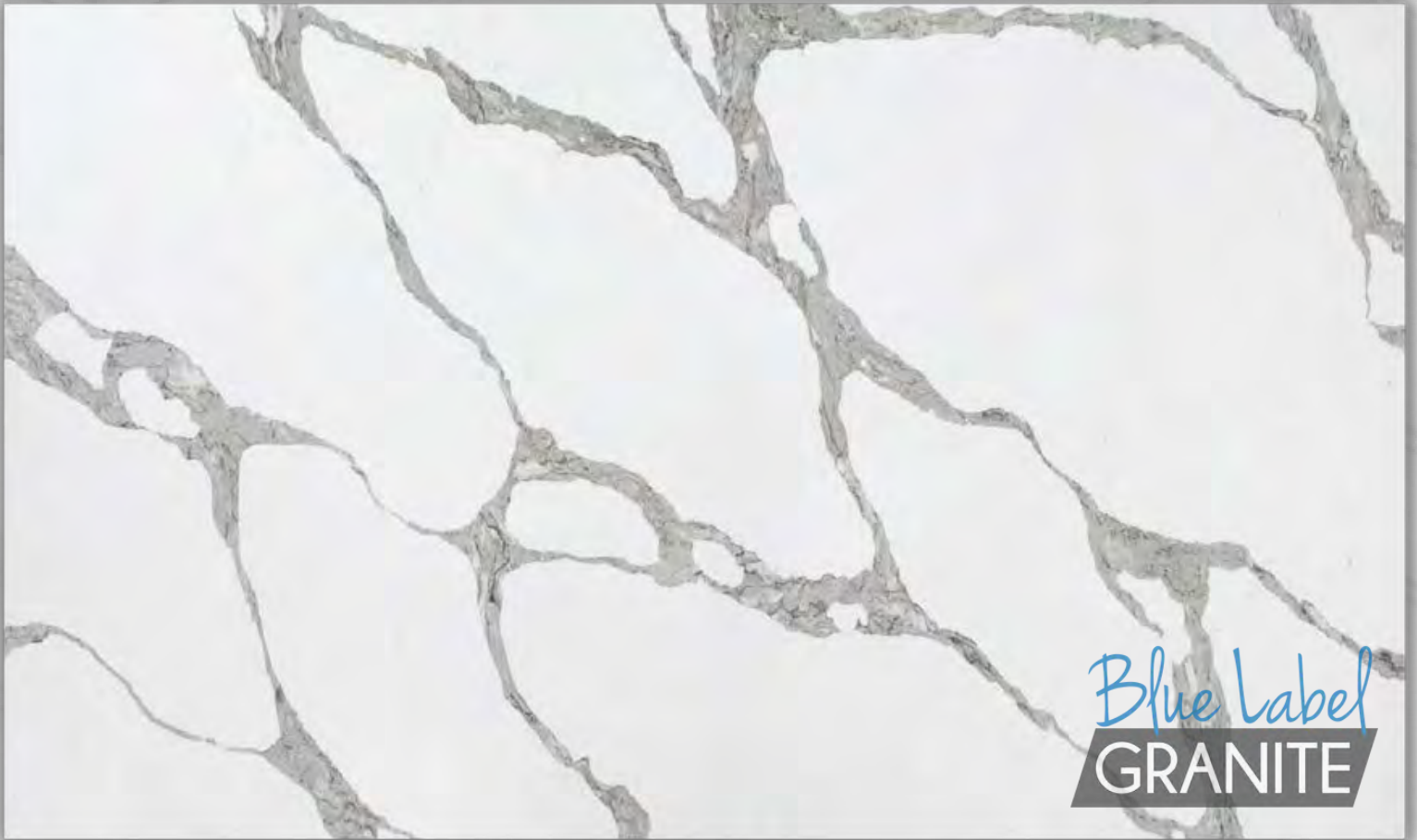
Quartz - Vicostone Engineered Quartz



Engineered Quartz is stain, scratch, and heat resistant. It does not need to be sealed.

Forza 3CM

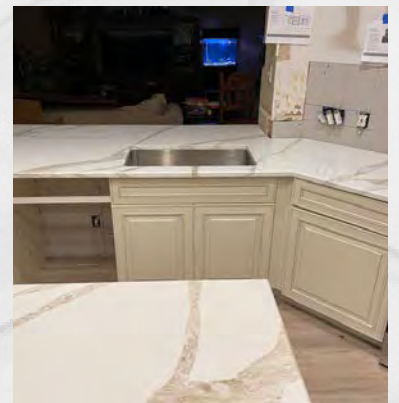
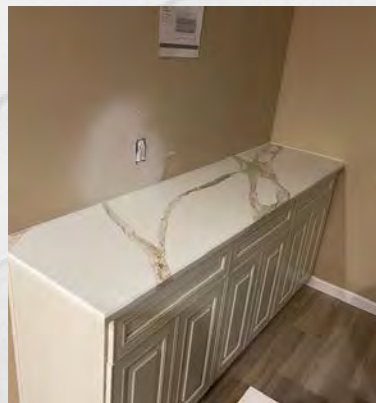
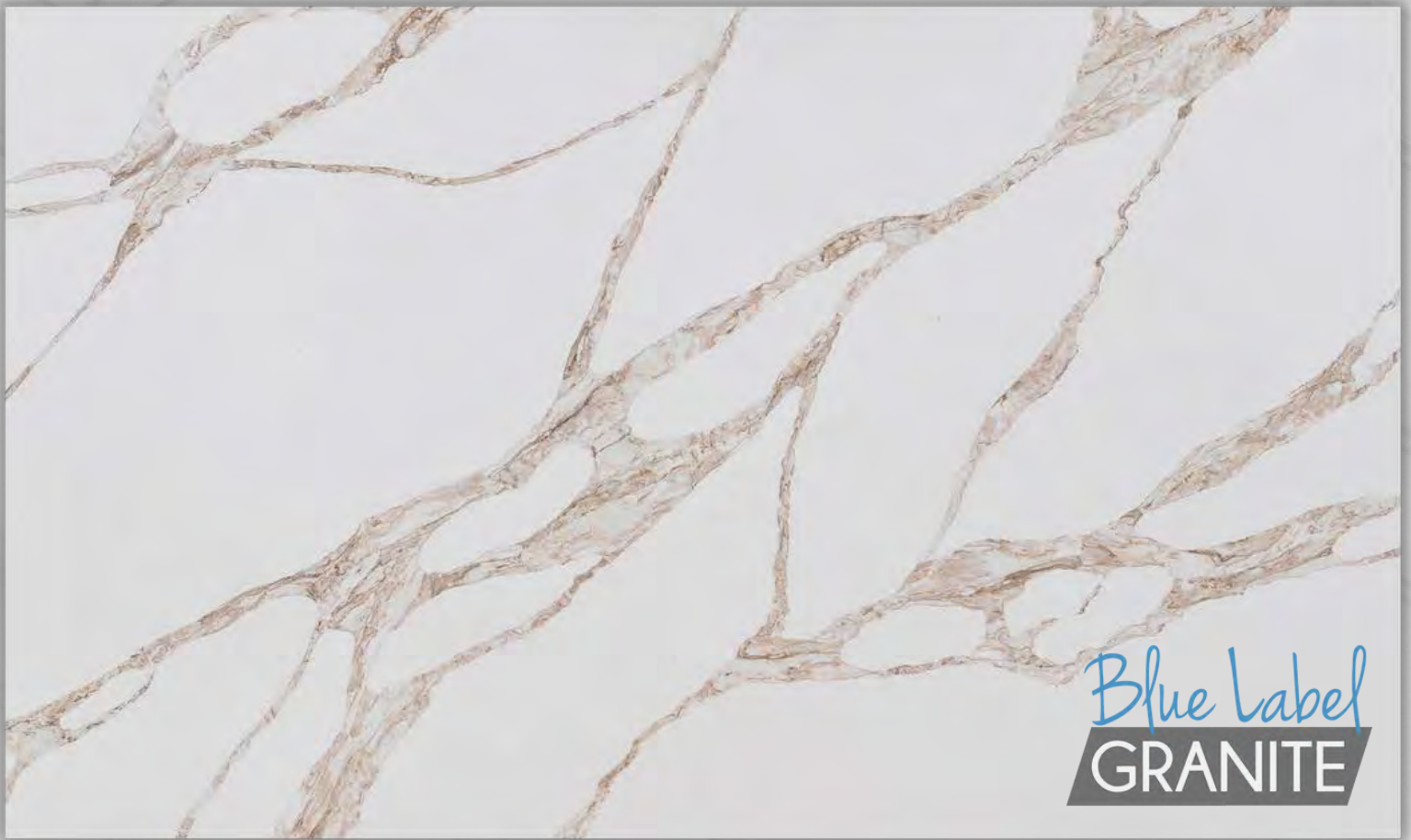
Quartz - Vicostone Engineered Quartz



Engineered Quartz is stain, scratch, and heat resistant. It does not need to be sealed.

Vivalioro 3CM

Quartz - Vicostone Engineered Quartz



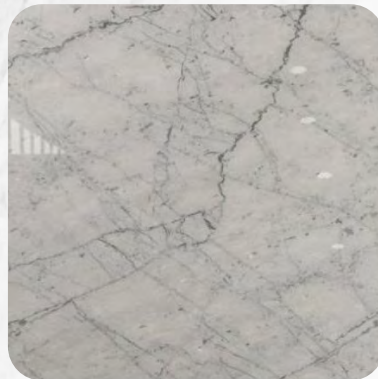
Engineered Quartz is stain, scratch, and heat resistant. It does not need to be sealed.



Marble Selections

Marble is a natural stone. It is softer than granite and is more vulnerable to scratch, stain or etch over time. Colors may vary. Marble surfaces need to be sealed every 6-12 months.

Click selection below



Fantasy Brown 3CM

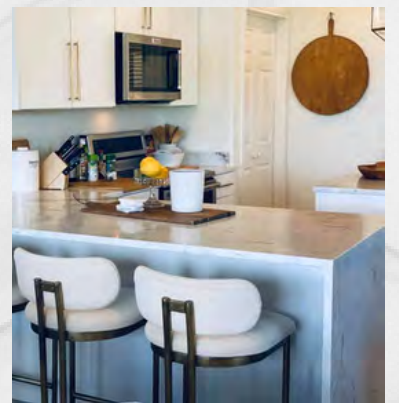
Marble - Natural Stone



Marble is a natural stone. It is softer than granite and is more vulnerable to scratch, stain, or etch over time. Marble surfaces need to be sealed every 6-12 months.

Calacatta Miele 3CM

Marble - Natural Stone



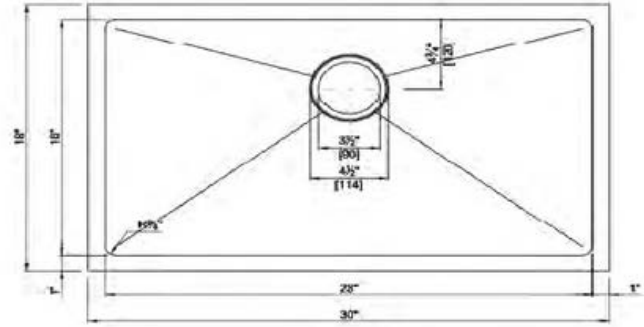
Marble is a natural stone. It is softer than granite and is more vulnerable to scratch, stain, or etch over time. Marble surfaces need to be sealed every 6-12 months.



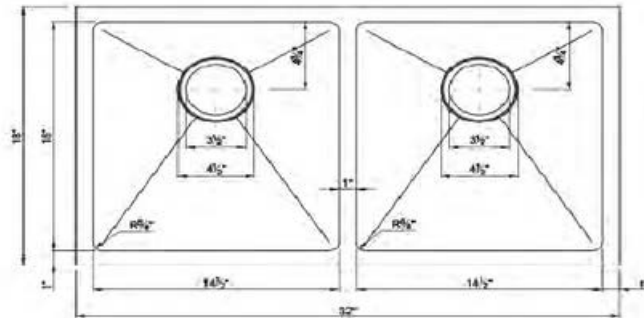
Sink Selections

In-Stock Kitchen Sinks

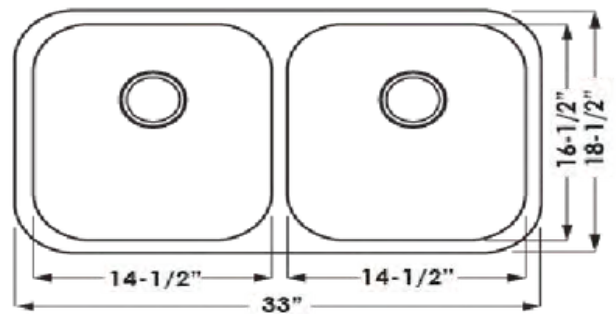
16g Micro Radius
Single Bowl



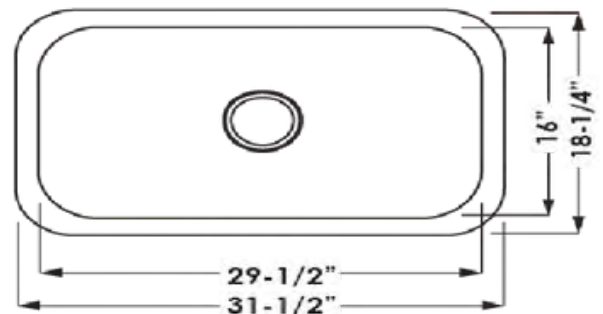
16g Micro Radius
Equal Bowl



18g Kitchen
Equal Bowl



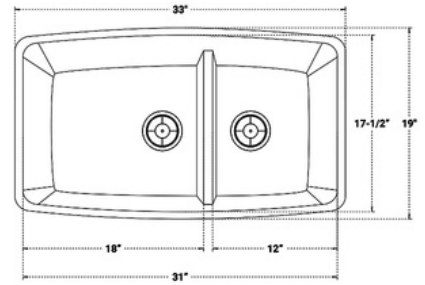
18g Kitchen
Single Bowl



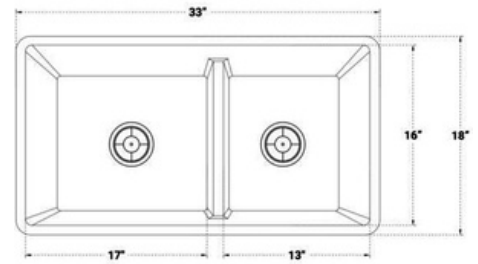
Blanco Kitchen Sinks

Color Options: White, Cinder, Biscotti, Truffle, Café Brown, Anthracite, Metallic Gray & Biscuit

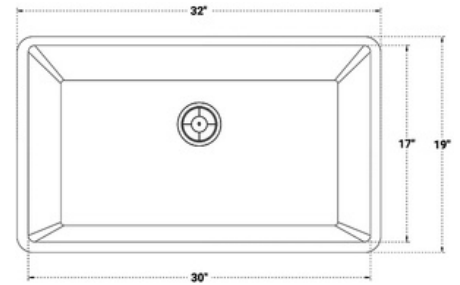
Blanco Performa
Medium 1.75
Cinder



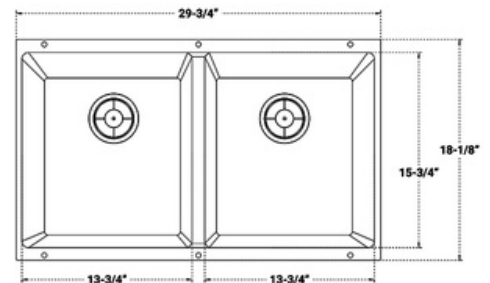
Blanco Precis
1.75 Low Divide
Concrete



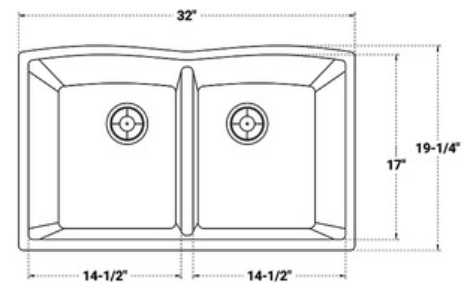
Blanco Precis
Super Single
Metallic Gray



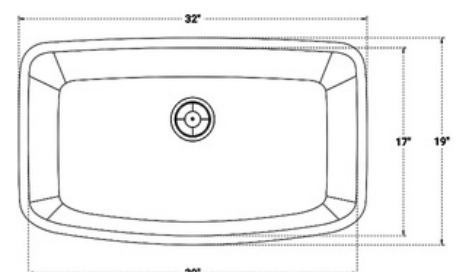
Blanco Precis
Equal Double
Coal Black



Blanco Diamond Equal
Double Low Divide
White

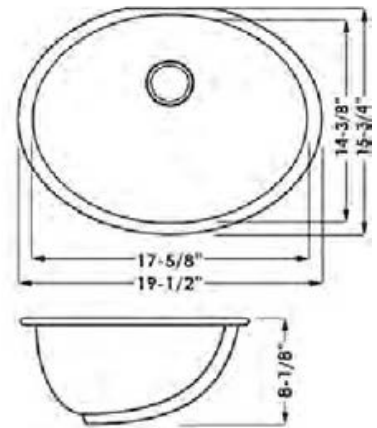


Blanco Valea Super
Single
Café Brown

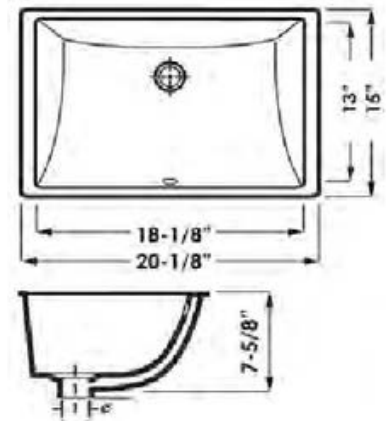


In-Stock Vanity Sinks

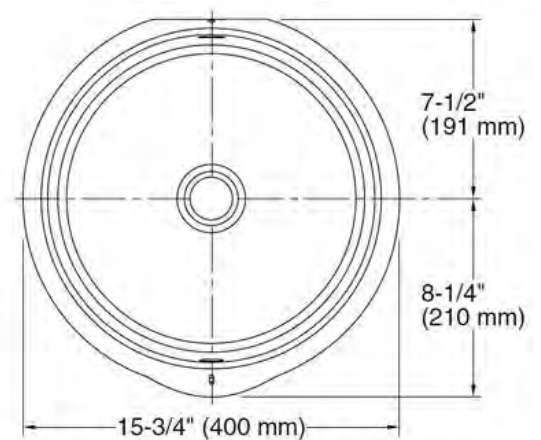
17X14 Oval
Vanity Sink



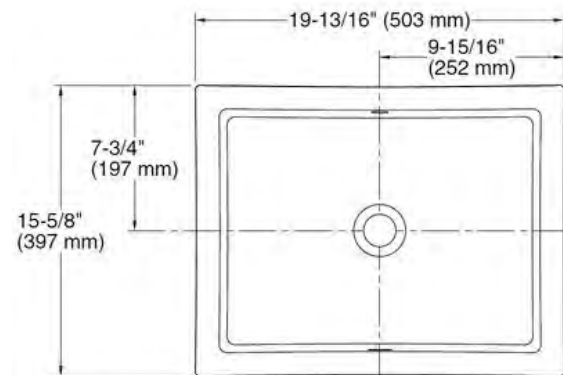
18X13
Rectangular
Vanity Sink



Kohler 2883-0
13.75" Verticyl
Round Sink



Kohler 2882-0
19 13/16x15 5/8
Verticyl
Rectangular Sink



In-Stock Bar Sinks



18g 16/16 bar Sink
Stainless 16x16x8



16g 18/15 Bar Sink
Stainless 18x15x7



18g Undermount
Stainless Bar Sink 23x18



16g Single Bowl Micro
Radius 23x18



Blanco Corence Single Bowl
Laundry Sink 25x22x10



Blanco Precis Large Bowl
Bar Sink 20 3/4x18x7 1/2



Blanco Precis Medium Bowl
Bar Sink 13 3/4x18x7 1/2



Blanco Diamond
Bar Sink 15x15x8

Standard Edge Profiles

Included In Square Footage Pricing



Eased



Crescent



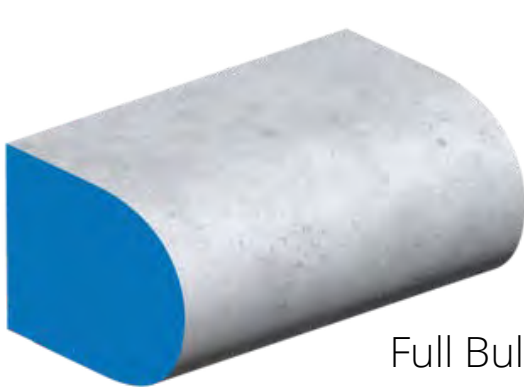
1/2" Bevel



1/4" Bevel

Upgraded Edge Profiles

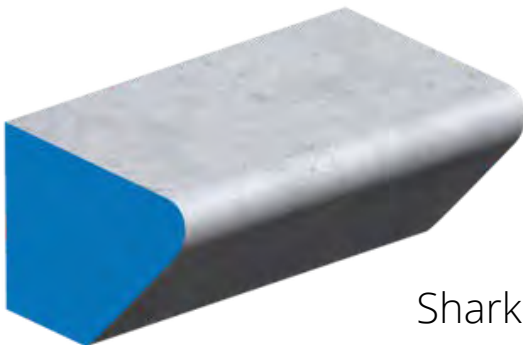
Price Per Edge Varies **Available For An Extra Charge**



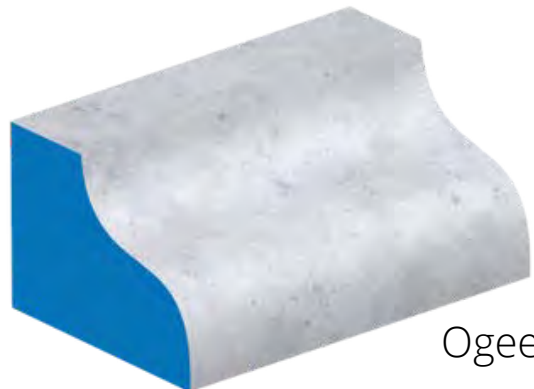
Full Bullnose



Half Bullnose



Shark Nose

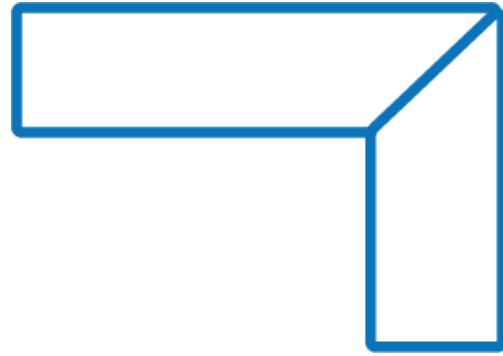


Ogee

Apron Front Options

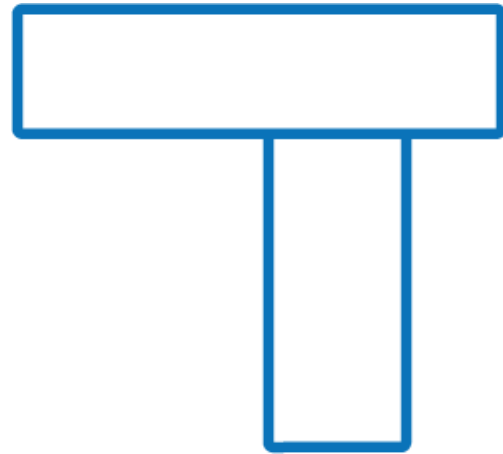
(Side View)

Mitered Apron Front



Stacked Apron Front

Set Back From The Edge



Stacked Apron Flush

Flush With Front Edge





Informational Documents

Click selection below

[Care &
Maintenance](#)

[Disclosure
Statement](#)

[Warranty &
Install
Terms](#)

[What to
Expect Day
of
Installation](#)

[FAQ's](#)



Natural Stone & Quartz ~ Care & Maintenance

All-natural stone and Quartz surfaces require proper maintenance and care. You just got your brand-new countertops, let's keep them beautiful for as long as possible!

Cleaning:

The best way to clean your stone is to use a mixture of dish soap and warm water along with a soft rag to wipe down your stone on a daily basis. If your stone starts to look dull, or you notice a film you are most likely using too much soap in your mixture. AVOID harsh cleaners that contain acidic components (ex: lemon, citrus), abrasive components, ammonia, or bleach. You also want avoid cleaners containing high levels of alcohol; these commonly leave streaks on stone.

Scratching:

Quartz & Natural Stones are extremely hard surfaces that are very resistant to scratching. We do recommend using cutting boards instead of cutting directly on the surface of your stone countertop. The reason being is that Natural Stone and Quartz are such hard surfaces that it is likely to dull the blade of your knife. Marble, Soapstone, Travertine or Honed countertops are more vulnerable to scratches and require extra care to avoid scratching or etching.

Sealing:

Blue Label Granite recommends resealing all stone every 12-18 months. With lighter nature stone it is typical for water rings to show, but they should dry out rather quickly. If you start to notice water rings are taking longer to dry out, this is indication that it is time to re-seal the stone. No two stones are the same, but some granite may only require sealing once every 3 years. Please contact us if you have any questions about your specific stone.

Heat:

While Natural Stone and Quartz are both heat resistant stone, we do not recommend exposing the stone to extreme heat directly. For example, curling irons or boiling pots off the stove. These items should not be placed on the stone itself. Extreme heat can cause thermal shock and result in your stone cracking.

Blue Label Granite cares about the quality, care, and satisfaction of your countertops. If you have any concerns or issues pertaining to your surfaces please feel free to contact us.



Disclosure Statement

Natural Stone - Includes any natural stone:

Marble, Granite, Quartzite, Soapstone Customer fully understands and agrees that natural stone is irregular and imperfect. Blue Label Granite has no control over the existence of any natural irregularities found in the natural stone and consequently assumes no liability for any fissures or inconsistencies and variations in color, texture and pattern found in the finished product originating from the raw material. Customer is responsible for looking over material with a Blue Label Granite representative prior to fabrication. Blue Label Granite will NOT polish the top surface of countertop material, EXCEPT at joint/seams.

Natural stone is susceptible to fissures and chips. Blue Label Granite reserves the right to use their best judgement in filling areas to most closely match the stone. Texture or finish of filled areas may vary from the rest of the stone.

Joints/Seams in Countertops:

Blue Label Granite reserves the right to determine the placement of any joints or seams in countertops based on countertop lay out. Final joint/seam placement will be determined when project is fabricated in shop. Joint/seam locations may vary based on size of slab, pattern, and/or defective areas of slabs that need to be avoided.

Blue Label Granite uses best efforts to minimize the width of joints/seams in countertops. Acceptable variance is from 1/16 inch to 1/8 inch. When joining two pieces of countertop pieces together there is no way to make the seam invisible or 100% smooth. You will be able to feel and see seams in your countertop. Degree of polish may vary at joint/seams. Depending on material, some seams may be more noticeable than others.

BUYING YOUR OWN MATERIAL:

Since you are providing the material, Blue Label Granite cannot warranty the material itself. We will help you look over the slab but if something is missed Blue Label Granite cannot take full responsibility for it. There is no mark up on this material, or help with the cost through our main suppliers. Therefore, if something cracks on the table when fabricating, Blue Label Granite will help but will not pay for it completely. You are purchasing the exact slabs you need for the project knowing that if an issue occurs, there might not be a matching slab to use to fix the defective piece.

Customer Signature: _____

Customer Print: _____

Date: _____



Warranty and Install Terms

Blue Label Granite will warranty your countertops for any fabrication and/or installation defect during the first year (12 months) after initial installation, limited to indoor installations only, provided that Blue label Granite installs the job. Blue Label Granite will not provide any warranty service if the product shows evidence that it has been tampered with, misused, abused, or altered, including chemical abuse (e.g. Oil Stains) and physical abuse (e.g. Excessive chipped edges) nor does it cover damage caused by items out of our control such as settlement, fire or acts of nature. This warranty does not extend to cover associated expenses such as plumbing, electrical, cabinetry, flooring, walls or any other costs that may be incurred in the repair or replacement of an item covered by this warranty.

Blue Label Granite's liability is limited to the repair or replacement of the defective stone piece only, subject to the availability of the stone color. If the color is no longer available, liability is limited to the cash value of the installed piece based on current square foot prices if we determine that a satisfactory repair cannot be made. The cabinets supporting the installed stone are the clients' responsibility and any cracks/breakages caused by not enough support or corbels, cleats etc. are not covered by this warranty. Blue Label Granite assumes no liability for cracking of countertop material installed on inadequately braced or supported cabinets.

This warranty does not include natural characteristics of granite such as color variation, water lines, surface marks or natural aging. Blue Label Granite has no control over the existence of any natural irregularities found in the natural stone and consequently assumes no liability for any fissures or inconsistencies and variations in color and pattern found in the finished product originating from the raw material. Blue Label Granite makes no warranties, express or implied, as to stain resistance or imperviousness of the products installed.

Additional Information for Natural Stone Customers

All Granite and Marble are both natural stone products; therefore, there will be natural imperfections. These imperfections are natural and are in no way flaws in the material. Colors and patterns will vary from bundle to bundle, and to some degree from slab to slab. The surface of granite is not totally smooth - there are pits, fissures, and gaps. These cannot be polished out, as it is the natural state of the stone. Countertops seams are inevitable on some jobs. Seam placement is based on many factors, including, but not limited to, slab length, cabinet support, and appliance compatibility. All seams are slightly beveled and filled with a polyester epoxy chosen to match the granite color as closely as possible. Seam width varies from job to job and is affected by many factors. Your countertops were sealed by Blue Label Granite and should be considered a temporary barrier, allowing time to wipe up spills before they can cause stains. All-natural stone is porous and must be sealed every 12 months. Some stones are more porous than others. This is not a defect of the stone; it is a natural characteristic. If the stone selected is a lighter color, it may need to be sealed as often as every 6 months. Stone sealers are available at Home Depot and Lowe's. If you have further questions regarding sealers or the sealing process, feel free to contact us at any time.

This warranty applies only to the initial owner of the job. The warranty is valid to the owners who have registered their countertop by returning this document to Blue Label Granite within 30 days of installation.

Customer Name: _____

Customer Address: _____

Install Date: _____

Customer Signature: _____ Date: _____



What To Expect Day of Installation

****Please read each item carefully****

- You will receive an email specifying date for installation; if anything changes Blue Label Granite will contact you.
- For safety reasons, we do not install in stormy weather conditions. If the weather does not permit installation, you will be notified and rescheduled to the next available date.
- We ask that all pets are put up/kept away from the work zone while the crew is there.
- Changes to any items on the approved estimate are not allowed after the deposit has been paid, unless agreed upon otherwise. The customer is solely responsible for what has been approved on the estimate.
- **TEAR OUT COUNTERTOPS & BACKSPLASH:** If Blue Label Granite is performing the tear out of existing countertops and/or backsplash, please remove ALL drawers in the project space and all items from lower cabinets to prevent contents from getting dirty. We are tearing out a layer of your kitchen, so there will be dust and debris. Customer is solely responsible for covering any and all surfaces that they would like protected from dust or debris. Demo is often loud and messy. Installers use vacuums and clean up at the end of install but DUST IS INEVITABLE. BLG is not responsible for additional cleaning fees.
- ****IMPORTANT -** If customer wants to re-use any fixtures, drain assemblies, strainer baskets, and/or hose lines, they are responsible for removing BEFORE the countertop tear out. If not removed prior to installation we cannot guarantee the pieces/fixtures will be left behind, undamaged, and/or all parts accounted for.
- Microwaves may be covering existing backsplash that you are having demoed by us. If this is the case, you are responsible for removing the microwave before installation/demo. If the microwave is not removed, the crew will not be able to demo the backsplash behind it and will not return to do so at a later time.
- If you are trying to keep your existing tile backsplash, we cannot guarantee that the tile will not be damaged during tear out/install. IF your existing backsplash is damaged, we will not be able to repair the tile. It will be your responsibility to contact someone who can and provide the necessary material.
- Areas around the work zone can be subject to damage during the demolition or installation, and/or piece adjustments happening on site. It is your responsibility to make sure any valuables around the work area are removed and/or covered. This includes shared walls to the work area as vibration could happen during the process and cause things to fall. Any floor covering to help prevent damage is solely up to the customer. We recommend putting down some ram board on hardwood flooring or luxury vinyl plank. It can be found at Home Depot.
- While we disconnect plumbing and take measures to prevent leaking, Blue Label Granite DOES NOT reconnect any plumbing, electric or gas connections (if quoted for electrical services, BLG will provide a licensed electrician). Our countertop installers are NOT licensed plumbers or electricians. Please note: we will mount the sink for you and drill the faucet holes (please have the faucet on site) but you will need to provide your own plumber to connect the faucet. BLG will not be responsible for monitoring plumbing once installers leave the jobsite.
- It is the customer's responsibility to hire a licensed plumber to reconnect plumbing after the installation. We will not be able to assist with any questions regarding plumbing hook ups to an unlicensed plumber.
- ****PLUMBING CONNECTS NEED TO WAIT 24 HOURS TO BE RECONNECTED**** (It can be longer than 24 hours as well.)
- When installing the dishwasher bracket the dishwasher itself may need to be adjusted to fit properly (raised or lowered). The crew is not responsible for adjusting the dishwasher for the bracket to fit.
- All stove tops and refrigerators need to be ON SITE during your countertop installation. Drop-In stove tops are cut on site but the crew is not responsible for placing the stove top in the cutout. If any of the required appliances are not on site during the installation, your project will be subject to a rescheduling fee up to \$500.00.
- It is not uncommon for cabinets to be out of level. If your cabinets are out of level the installers may need to shim underneath the countertop pieces to provide a sturdy and level countertop surface. If they have to shim the countertops underneath, this will result in a gap between the countertop and the cabinet.
- Overhangs on the countertop could vary up to ½". This can be due to many different factors including out of square walls and cabinets. Blue Label Granite will not be responsible for replacing any pieces that have an overhang difference of equal to or less than ½". This includes bar top overhangs.

Blue Label GRANITE

- When placing two pieces of stone together to create a seam, it is NOT uncommon for the seam to be noticeable. There could also be a semi-rough texture to it as well. Polishing on top of any stone is not something we recommend or will perform. The crew will do their best to make the seam as inconspicuous as possible - but don't expect to not see it or feel it completely.
- Blue Label Granite does not offer any trim, carpentry, painting, or sheetrock services. Any installation can be subject to these damages, especially those between walls, around columns, etc.
- Blue Label Granite cannot be held responsible for cost of repairs needed due to the installation.
- If we are performing a bar cut down, it is possible that you may have existing plumbing in the way. We recommend having a plumber come out before or during the installation in case they are needed to move the plumbing. If plumbing is in the way and the countertop installation has to be rescheduled, it will result in a \$250.00 rescheduling fee and will go on the next available date.
- Bathroom Mirrors are at risk of breaking during removal and/or installation of existing countertops. Blue Label Granite is NOT responsible if the mirror breaks. It will be the customer's responsibility to remove the mirror prior to scheduled countertop installation.
- If backsplash measurements are being obtained with currently installed countertop material, the backsplash will fit as tight as possible with the measurements that can be obtained. If you would like an exact fit, you can be quoted for the demo first (additional trip charge) and measurements/installation after.
- Formerly installed sinks are also at risk of breaking during the removal of existing countertops. If you want to keep your former sink, Blue Label Granite will try their best to carefully remove it during the demo of the countertops. However, there is a 75% chance the sink WILL break or become damaged. Blue Label Granite is not responsible if it does and will not replace the sink cutout piece so a new sink design can be used.
- The adhesives and epoxies used during installation may emit a strong odor. If you have small children or sensitive occupants in the home, please plan accordingly.
- Please keep in mind that some mess will occur during the installation process, and our crews will clean up after themselves once the install is complete. The dust can still settle after the installation is complete and the crew has left.
- All natural stone countertops will be sealed by the install crew at the end of the installation. All future sealing and maintenance is the responsibility of the customer.
- Rescheduling your set installation date can result in a \$250-\$500 rescheduling fee added to your final balance.
- The next available date for installations that have to be rescheduled could be anywhere within 3-10 business days.
- Please note that the crew coming out for your installation is highly trained and experienced. Allowing them to work uninterrupted is the best plan of action. Of course, please feel free to watch. It can be very interesting!
- Other unforeseen issues can arise during an installation that is not noted in this document. This does not mean that Blue Label Granite can be held responsible for them.
- **END OF INSTALL INSPECTION:** At the end of installation please make sure to take the time to look over the countertop thoroughly. This may be after the installers leave that you get a chance to look over closely. If you have ANY concerns or questions, please notify us at [512.810.2239](tel:512.810.2239) immediately. BLG would like to address any issues BEFORE sinks are re-connected by plumbers. As we are not licensed plumbers, if the plumbing must be disconnected for any reason, ~~Blue Label Granite is not responsible for the reconnection/cost.~~
- **IMPORTANT:** The remaining balance for your invoice will be [due on the day of install](#). ~~By agreeing to this document, you authorize Blue Label Granite to use the credit card on file to run the balance the morning of your installation. If you would like to pay with a different credit card than you used for the deposit, or you would like to pay with a check, please notify the office prior to your scheduled installation date. If you opt to pay with a check, this must be given to the installers at the time of install. If a check is not given to installers, your card on file will be ran.~~

At the end of this process we hope that you will LOVE your new countertops! If you are not completely satisfied please contact us and let us know how we can help! Thank You for choosing us for your project!

Blue Label Granite Team

Blue Label Granite
512.738.5788



Frequently Asked Questions

Do You Offer Any Remnants/ What Is A Remnant?

We do have a selection of remnants we can sell! A remnant is simply a piece of stone that is leftover from a full slab.

A lot of times you will hear that remnants are cheaper when you only need a small piece of stone for your project. Simply put, a remnant is cheaper than purchasing a full slab of the specific color you are looking for.

Our remnants are not typically cheaper than our In-Stock Options.

Is Granite Cheaper Than Quartz?

Granite is usually cheaper than Engineered Quartz! There are some Engineered Quartz options that are cheaper than granite. Price typically varies by the style of the stone and the availability of it.

Do You Offer Free Estimates?

We do offer free estimates! Please note if you are getting new cabinets, they need to be installed before we can come out for a site measure. If you have dimensions or cabinet plans they can be emailed over for a soft quote. All final estimates are done with a site measure!

What Type Of Stone Is Best For Outdoors?

Granite or Soapstone is best for an outdoor installation!

What's The Difference Between Quartz and Granite?

Engineered Quartz is a man-made stone. Each Engineered Quartz slab is made to look exactly the same. Granite is a natural stone formed in the Earth that is found at a Quarry and extracted for use.

What Does Your In-Stock Selection Mean?

Our In-Stock options are stone we offer by the square foot pricing. This means you are only paying for what you need, not purchasing it by the slab!

If I Don't Like Any Of The In-Stock Selections, What Are My Options?

There are a number of slab yards in the North Austin area where you can go and pick out your own material! When visiting these slab yards, you can let them know you would like the selections to be emailed over to Blue Label Granite. From there we would be able to let you know the pricing!

How Long Does The Installation Take?

Typically an installation takes only one day!

Do You Offer Backsplash Installations?

We do not offer any tile backsplash installations at this time. Please ask us for recommendation!

What Type Of Stones Need To Be Sealed And How Often?

Any NATURAL stone needs to be sealed. This includes granite, marble and quartzite. Engineered Quartz is NOT a natural stone, therefore it does not need to be sealed.

We recommend sealing Granite every 12-18 months.

We recommend sealing Marble and Quartzite every 6-12 months.

What Sealer Do You Recommend?

We recommend Stone Tech Bullet Proof Sealer! It can be found on Amazon.

How Do I Clean My Countertops?

The best way to clean your countertops is with warm water and soap.